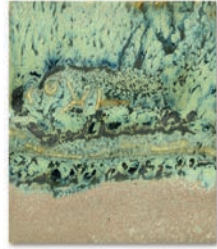


Potter's Choice ^{Cone 5-6} Layering

PC-1
Saturation
Metallic*
over
PC-43
Toasted Sage



PC-2
Saturation
Gold
over
PC-43
Toasted Sage



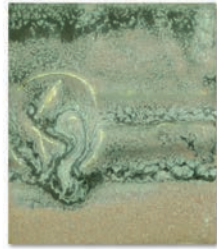
PC-20
Blue Rutile
over
PC-43
Toasted Sage



PC-27
Tourmaline
over
PC-43
Toasted Sage



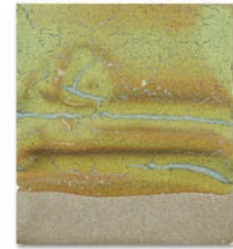
PC-4
Palladium
over
PC-43
Toasted Sage



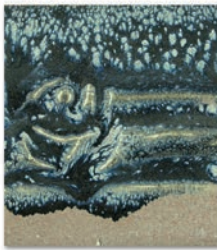
PC-21
Arctic Blue
over
PC-43
Toasted Sage



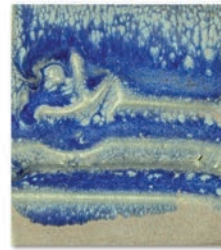
PC-28
Frosted
Turquoise
over
PC-43
Toasted Sage



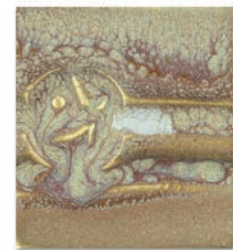
PC-12
Blue
Midnight
over
PC-43
Toasted Sage



PC-23
Indigo
Float
over
PC-43
Toasted Sage



PC-32
Albany Slip
Brown*
over
PC-43
Toasted Sage



PC-43 Layering Notes: Brush on two layers of base coat. Brush on two layers of top coat. (Let dry between coats.)

Clay: AMACO® Buff Stoneware Clay No. 46
Firing: Test tiles have been fired to Cone 6

www.layeringpcs.info



Join the conversation
www.facebook.com/groups/potterschoiceex

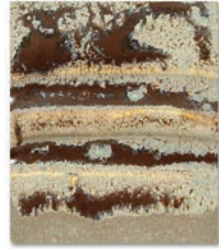
over
PC-43
Toasted Sage

PC-33
Iron Lustre
over
PC-43
Toasted Sage

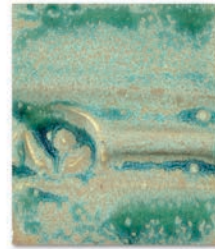


Color may vary between printed copies.

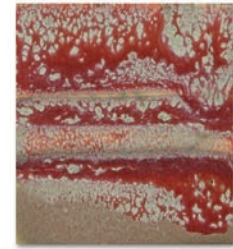
PC-35
Oil Spot
over
PC-43
Toasted Sage



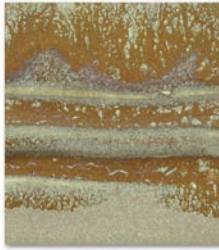
PC-45
Dark Green
over
PC-43
Toasted Sage



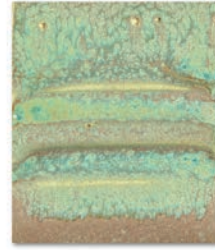
PC-55
Chun Plum
over
PC-43
Toasted Sage



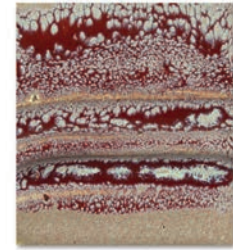
PC-37
Smoked
Sienna
over
PC-43
Toasted Sage



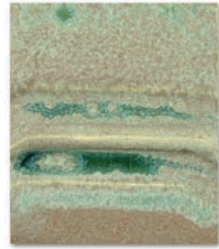
PC-46
Lustrous
Jade
over
PC-43
Toasted Sage



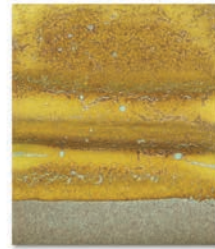
PC-59
Deep
Firebrick
over
PC-43
Toasted Sage



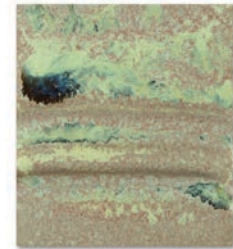
PC-40
True
Celadon
over
PC-43
Toasted Sage



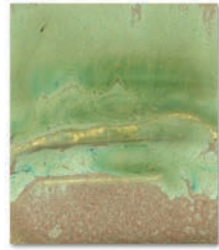
PC-49
Frosted
Melon
over
PC-43
Toasted Sage



PC-60
Salt Buff*
over
PC-43
Toasted Sage



PC-42
Seaweed
over
PC-43
Toasted Sage



PC-50
Shino
over
PC-43
Toasted Sage



PC-61
Textured
Amber
over
PC-43
Toasted Sage



The Art & Creative Materials Institute AP (Approved Product) seal certifies this product to be safe for use by all ages. Conforms to ASTM D-4236.



The Art & Creative Materials Institute CL (Caution Label) seal restricts this product from children under the age of 13. Older users must follow all cautionary labeling. Conforms to ASTM D-4236.

WARNING (PC-1, PC-32, & PC-60): These products contain a chemical known to the State of California to cause birth defects or other reproductive harm.

PC-53
Ancient
Jasper
over
PC-43
Toasted Sage



PC-62
Textured
Amber Brown
over
PC-43
Toasted Sage

