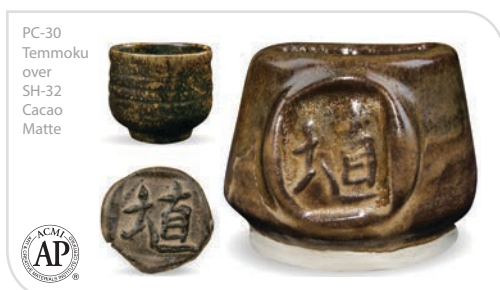
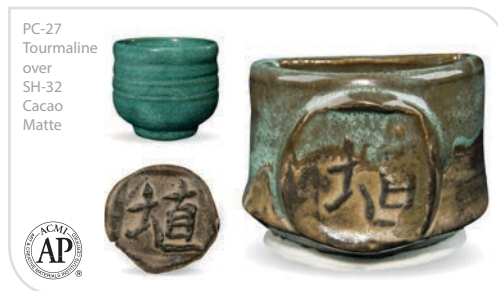




www.layeringpcs.info

LAYERING Potter's Choice Shines

Cone 5/6



over SH-32 Cacao Matte

SH-32 Layering Notes: Brush on three layers of base coat. Brush on three layers of top coat. (Let dry between coats.)

Clay: AMACO® A-Mix White Stoneware No. 11

Firing: Test tiles have been fired to Cone 6

Join the conversation
www.facebook.com/groups/potterschoiceex



PC-48 Art Deco Green over SH-32 Cacao Matte on AMACO A-Mix White Stoneware No. 11 Clay

PC-33
Iron
Lustre
over
SH-32
Cacao
Matte



PC-34
Light
Sepia
over
SH-32
Cacao
Matte



PC-35
Oil Spot
over
SH-32
Cacao
Matte



PC-36
Ironstone
over
SH-32
Cacao
Matte



PC-37
Smoked
Sienna
over
SH-32
Cacao
Matte



PC-39
Umbur
Float
over
SH-32
Cacao
Matte



PC-43
Toasted
Sage
over
SH-32
Cacao
Matte



PC-45
Dark
Green
over
SH-32
Cacao
Matte



PC-48
Art Deco
Green
over
SH-32
Cacao
Matte



PC-49
Frosted
Melon
over
SH-32
Cacao
Matte



PC-52
Deep
Sienna
Speckle
over
SH-32
Cacao
Matte



PC-53
Ancient
Jasper
over
SH-32
Cacao
Matte



PC-55
Chun
Plum
over
SH-32
Cacao
Matte



PC-57
Smokey
Merlot
over
SH-32
Cacao
Matte



PC-60
Salt
Buff *
over
SH-32
Cacao
Matte



The Art & Creative Materials Institute AP (Approved Product) seal certifies this product to be safe for use by all ages. Conforms to ASTM D-4236.



The Art & Creative Materials Institute CL (Caution Label) seal restricts this product from children under the age of 13. Older users must follow all cautionary labeling. Conforms to ASTM D-4236.



PC-61
Textured
Amber
over
SH-32
Cacao
Matte



PC-62
Textured
Amber
Brown
over
SH-32
Cacao
Matte

